



Anyview A8

MONITOR MODULAR
DE PACIENTE

Aprobado Por

invimä
Instituto Nacional de Vigilancia de Medicamentos y Alimentos

FDA



 **ISTRICLINIC**
Asesoría, dotación y respaldo.

- Direccion: Cra 47 # 76 – 60 Piso 1
- Telefono: (5) 3681391 - 320 568 5481
- Cotizaciones: servicioalcliente@districlinic.com.co
- Servicio tecnico: serviciotecnico@districlinic.com.co
- www.districtclinic.com.co

Size and Weight

- Size : 434mmx389mmx206mm
- Weight : ≤11kg
- Standard module slot: 4
- Additional module rack Slot : 1

Power supply

- Power Voltage: AC 100-240V 50/60Hz
- Power Input: ≤150VA
- Input Current: 1.7~0.8A
- Safety class: Category I

Display

- 17" Color Anti-glare TFT-LCD
- Resolution : 1280x1024 pixels

Battery (Option)

- Type: Rechargeable Lithium battery, 11.1V/4.0AH
- Operating time under the normal use and full charge : ≥60minutes (2 batteries for 120 minutes)

Recorder (Option)

- Method : Thermal dot array
- Paper width : 50 mm (1.97 in)
- Paper length: 15m
- Paper Speed : 12.5 / 25 / 50 (mm/sec)
- Traces : Maximum 3 tracks
- Recording way : Real-time recording, Periodic recording, Alarm recording

Alarm

- Level : Low, medium and high
- Indication : Auditory and visual
- Patient Physiological Alarm Light color: Yellow & Red;
- Equipment Technical Alarm Light color: Blue
- Supports Pitch Tone and multi-level volume;
- Supports custom arrhythmia tone

Input device

- Touch button: standard config, support operation of shortcut menu.
- Knob: standard config
- Mouse input: Support
- Keyboard input: Support

System Output & Extensible Interfaces

- Ethernet Network : 2 Standard RJ45 socket
- Defibrillation Output : 1 RJ11 socket
- Nurse Call : 1 BNC socket
- Video Output : 1 DVI port, 1 VGA port
- USB1.1 port : 6
- Auxiliary Module Rack connector : 1
- SD memory card : 2G (Standard config)
- Analog Output (ECG or IBP) : Option

Trend & Reviewing :

- Trend : 168 hours
- NIBP measurement reviewing : 1000 groups
- ARR event: 128 groups of ARR event and the associated waveform.
- Alarm events: 128 groups of parameter alarm events and associated parameter waveform at the alarm moment
- Holographic waveform: The storage time depends on the stored waveforms and the quantity of them.

Environment

- Operating temperature : 0~+40°C
- Storage temperature : -20°C to +50°C
- Operating humidity : 15% to 85% (non condensing)
- Storage humidity : 10% to 93% (non condensing)
- Operating atmospheric pressure : 860hPa to 1060hPa
- Storage atmospheric pressure : 500hPa to 1060hPa

Safety:

- IEC60601-1 Approved, CE marking according to MDD93/42/EEC

Performance:

ECG

- Lead Mode : 3-leads ECG input
5-leads ECG input
12-leads ECG input
- Lead selection I, II, III, aVR, aVL, aVF, V-
I, II, III, aVR, aVL, aVF, V1-V6 (option)
- Gain : 2.5 mm/mV(x0.25), 5 mm/mV(x0.5), 10 mm/mV(x1),
20 mm/mV(x2), 40 mm/mV(x4), Auto
- CMRR : Monitor mode ≥105dB
Surgery mode ≥105dB
Diagnostic mode ≥90dB
- Frequency response (-3dB):
Monitor mode 0.5~40Hz
Surgery mode 1~25Hz
Diagnostic mode 0.05~150Hz
- Input impedance : ≥5.0 Mohm
- ECG signal range : ±10.0 mV
- Electrode offset potential : ≤50 mV
- Patient Leakage Current : <10 uA
- Standardizing signal : 1 mV ± 5%
- Baseline recovery : <5s after Defibrillation (Mon or Surg mode)
- Indication of electrode separation : Every electrode (exclusive of RL)
- Protection: Breakdown Voltage 4000VAC 50/60Hz; defibrillator proof
- Sweep speed : 12.5mm/s, 25mm/s, 50mm/s
- HR
Range : Adult 10~300 bpm
Pediatric & Neonate: 10~350bpm

Refreshing time : ≤50 bpm Per 2 pulses
50~120bpm Per 4 pulses
≥120bpm Per 6 pulses

- Resolution : 1 bpm
- Accuracy : ±1% or ±1 bpm, whichever is greater

ST segment

- Measurement range : -2.0mV~2.0mV
- Accuracy : -0.8mV~0.8mV, ±0.02mV or ±10% whichever is greater
Over ±0.8mV, unspecified
- Resolution : 0.01mV

RESP

- Method : Thoracic impedance
- Lead Selected from: I (RA-LA) or II (RA-LL); Default: I
- Gain : x0.25, x1, x2, x4
- Bandwidth: 0.25 Hz to 2.0Hz (-3dB)
- Sweep speed : 6.25mm/s, 12.5mm/s, 25mm/s
- Measurement Range : 0~150 rpm
- Resolution : 1 rpm
- Accuracy : ±2 rpm or 2% whichever is greater
- Delay of Apnea Alarm : 10s, 15s, 25s, 30s, 35s, 40s, 45s, 50s, 55s, 60s

NIBP

- Way of measurement : Automatic oscillometry
- Range of measurement :
- Adult : SYS 30~270 mmHg
DIA 10~220 mmHg
MAP 20~235 mmHg
- Child : SYS 30~235 mmHg
DIA 10~220 mmHg
MAP 20~225 mmHg
- Neonate : SYS 30~135 mmHg
DIA 10~100 mmHg
MAP 20~125 mmHg
- Cuff pressure range : 0~300 mmHg
- Resolution : 1 mmHg
- Pressure Accuracy : Static : ±2% or ±3 mmHg, whichever is greater
Clinical : ±5 mmHg average error
standard deviation : ≤8 mmHg
- Unit : mmHg, kPa
- Measurement mode: Manual, Auto, STAT
2, 4, 8, 12hours
- Intervals for AUTO measurement time : 1, 2, 3, 4, 5, 10, 15, 30, 60, 90 minutes;
- STAT mode cycle time : Keep 5 minutes, at 5 seconds interval.
- Overpressure Protection : Hardware and software double protections
- Pulse rate range : 40 ~ 240 bpm

BLT-SpO2 (Digital Technic)

- Measurement Range : 0~100%
- Resolution: 1%
- Accuracy: At 70~100%, ±2%
At 0~69%, unspecified

PR

- Measurement Range : 25~255 bpm
- Resolution : 1 bpm
- Accuracy : ±1% or ±1 bpm, whichever is greater

Nellcor-SpO2 (option)

- Measurement Range : 0~100%
- Resolution : 1%
- Accuracy : At 70~100%, ±2% (Adult)
At 70~100%, ±3% (Neonate)
At 70~100%, ±2% (Low Perfusion)
At 0~69%, unspecified

PR

- Measurement Range : 20~300 bpm
- Resolution : 1 bpm
- Accuracy : 20bpm to 250bpm: ±3 bpm
251bpm to 300bpm: unspecified

Masimo SpO2 (option)

- Measurement range 0% to 100%
- Resolution: 1%
- Accuracy: 70% to 100% : ±2% (adult/pediatric, non-motion conditions)
70% to 100% : ±3% (neonate, non-motion conditions)
70% to 100% : ±3% (motion conditions)
0% to 69% , unspecified
- Average time: 2-4s, 4-6s, 8s, 10s, 12s, 14s, 16s

PR

- Measurement range: 25 bpm to 240 bpm
- Accuracy ±3 bpm (non-motion conditions)
±5 bpm (motion conditions)
- Resolution: 1 bpm

TEMP

- Max Channel : 8
- Measurement way : Thermal resistance way
- Measurement Range : 0.0°C~50.0°C(32°F~122°F)
- Accuracy : ±0.1°C or ±1.1°F (exclusive of probe)
- Resolution : 0.1°C or 1.1°F
- Unit : Celsius (°C), Fahrenheit (°F)
- Connecting cable : Compatible with YSI-400 serial

IBP

- Max Channel : 8
- Measurement way : Directly invasive pressure measurement
- Sensitivity of transducer: 5uV/V/ mmHg, ±2%
- Impedance of transducer: 300 to 3000Ω

- Measurement Range : -50 ~ +350 mmHg
- Resolution : 1mmHg
- Unit : mmHg, kPa, cmH2O

- Accuracy : Static : ±1 mmHg or ±2%, whichever is greater (exclusive of transducer)
±4 mmHg or ±4%, whichever is greater (inclusion of transducer)

- Dynamic : ±4 mmHg or 4%, whichever is greater
- Transducer sites : Arterial Pressure (ART)
Pulmonary Artery Pressure (PA)
Left Atrium Pressure (LAP)
Right Atrium Pressure (RAP)
Central Venous Pressure (CVP)
Intracranial Pressure (ICP)
P1/P2
- Selection of measurement range :
ART : 0 ~ +350mmHg
PA : -10 ~ +120 mmHg
CVP/RAP/LAP/ICP: -10 ~ +40 mmHg
P1/P2 : -50 ~ +350 mmHg

ETCO2 (Sidestream)

- Measure method : Infrared spectrum
- Measurement Range : 0.0~13.1% (0~99.6 mmHg)
- Resolution : 1 mmHg kPa
- Unit : % , mmHg, kPa
- Accuracy : 0% to 4.5% : ±0.3% (±2.0 mmHg)
5.0% to 13.1% : < ±10 % of the reading
- Measurement range of awRR : 3~150 rpm
- Calibration: Offset calibration: auto, manual, Gain calibration

ETCO2 (Mainstream)

- Measure method : Infrared spectrum
- Warm up time : Capnogram displayed in less than 15 seconds, At an ambient temperature of 25° C, full specifications within 2 minutes.
- Measurement Range : 0.0~19.7% (0~150 mmHg)
- Resolution : 1 mmHg
- Rise time (10 l/min) : ≤60 ms
- Unit : % , mmHg, kPa
- CO2 Accuracy: 0 - 40 mmHg, ±2 mmHg
41 - 70 mmHg, ±5% of reading
71 - 100 mmHg, ±8% of reading
101 - 150 mmHg, ±10% of reading
(at 760 mmHg, ambient temperature of 35°C)
- awRR measurement range: 0~150 rpm
- awRR measurement Accuracy: ±1 rpm

ETCO2 (Microstream)

- Measure method : Infrared spectrum
- Warm up time : Capnogram displayed in less than 20 seconds, At an ambient temperature of 25° C, full specifications within 2 minutes.
- Measurement Range : 0 ~ 19.7 % (0 - 150 mmHg)
- Resolution : 1mmHg
- Unit : % , mmHg, kPa
- CO2 Accuracy: 0 - 40 mmHg, ±2 mmHg
41 - 70 mmHg, ±5% of reading
71 - 100 mmHg, ±8% of reading
101 - 150 mmHg, ±10% of reading
(at 760 mmHg, ambient temperature of 25°C)
(when RR > 80 rpm, all the range is ±12% of reading)
CO2 response time : <3s
awRR measurement range: 2~150 bpm
awRR measurement Accuracy: ±1rpm
Sample Flow Rate: 50 ml/min ±10 ml/min

Anesthetic Gas

- Measure method : Infrared spectrum
- Measure mode : Mainstream
- Fi and Et values : CO2, N2O, O2, AG (HAL, ISO, ENF, SEV, DES)
- Resolution : 1%
- Unit : %
- Calibration : Room air calibration performed automatically when changing airway adapter (<5 sec)
- Warm-up time : <10 s, full accuracy within 1 min
- Measurement and alarm range of AG:

Gas	Range	Accuracy
CO2	0-10 %	± (0.3% ABS+4% REL)
N2O	0-100 %	± (2% ABS+8% REL)
O2	10-100 %	± (2% ABS+2% REL)
HAL, ISO, ENF	0-5%	± (0.15% ABS+10% REL)
SEV	0-8%	± (0.15% ABS+10% REL)
DES	0-18%	± (0.15% ABS+10% REL)

 - awRR measurement range: 0~150 rpm
 - awRR measurement Accuracy : ±1 rpm
 - Rise time (flowing speed 10 l/min) CO2 ≤ 90 ms
O2 ≤ 300 ms
N2O ≤ 300 ms
Hal, Iso, Enf, Sev, Des ≤ 300 ms
 - Total system response time : < 1 seconds

Noninvasive Cardio Output (ICG)

- Method: Measurement of thoracic electrical bioimpedance
- Measurement Range: HR: 40~250 bpm
SV: 5~250ml
SI: 5~125ml/m2
C.O. : 1.4~15 L/min
TFC: 15~143 KΩ
- Accuracy: HR ±2bpm
SV: unspecified
C.O unspecified
- Alarm range: C.I.: 0.0 L/min/m2 to 15.0 L/min/m2 continuously adjustable.
TFC: 10 kΩ to 150 kΩ continuously adjustable.

Standard configuration of Anyview A8:

Mainunit: 17" anti-glare TFT-LCD display, 4 Standard module slot, 1 Additional module rack Slot (for EMS all-in-one module), 13 Touch buttons, 2RJ45 ethernet socket, 1 Defibrillation Output, 1 Nurse Call socket, 1 DVI port, 1 VGA port, 6 USB1.1 port, 1 Auxiliary Module Rack connector, 2G SD memory card.

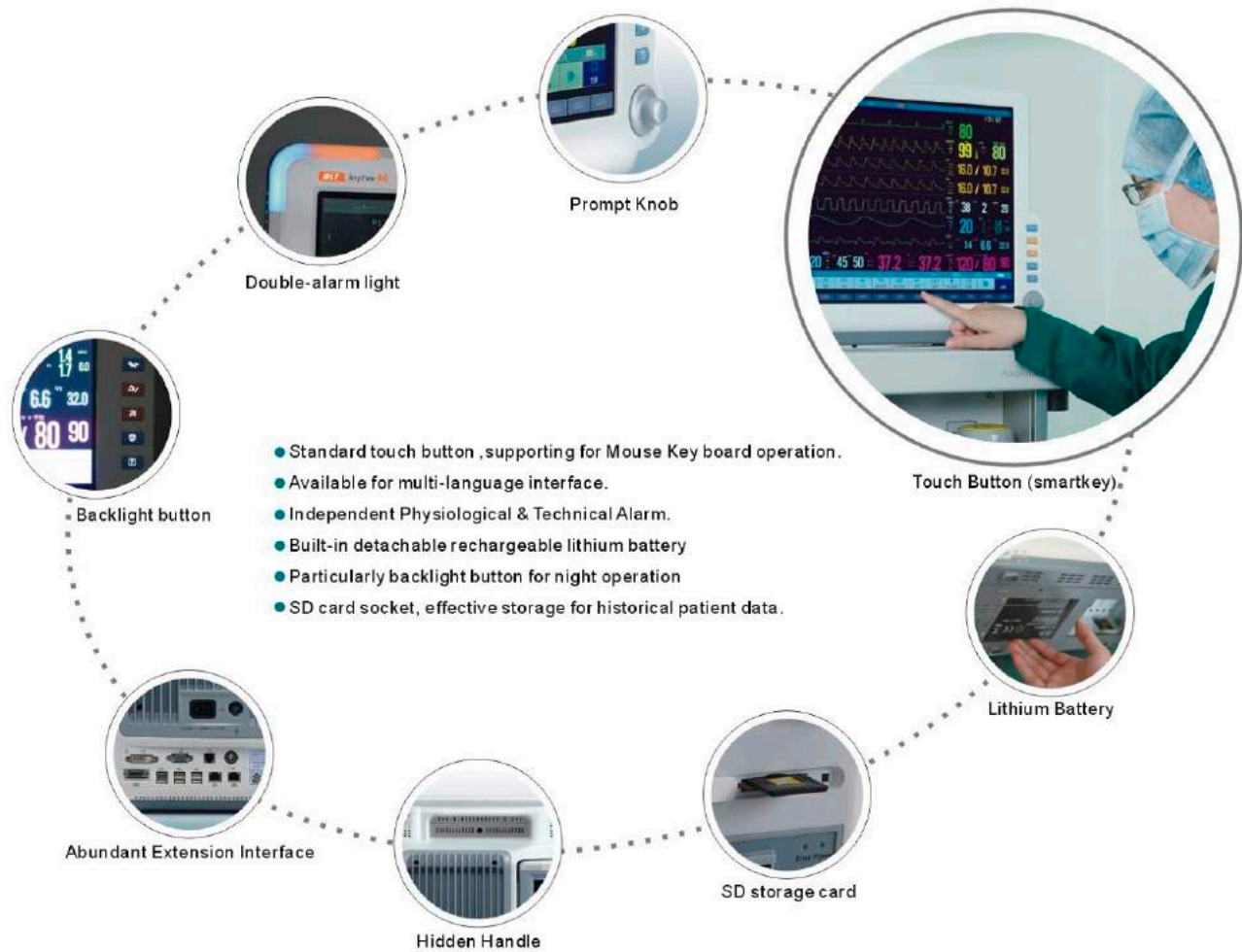
Option of AnyView A8:

EMS module: 8 kinds of option
Option Module: Sidestream CO2 module, Microstream CO2 module, Mainstream CO2 module, AG module, ICG module, IBP module, Temp module, SpO2 module
Module Rack: Auxiliary Module Rack
Navigating: USB compatible mouse and keyboard.
Printing: 3 channel thermal recorder
Mounting: Rolling stand, wall mount
Battery: 11.1V/4.0AH Rechargeable Lithium Battery(max 2 pcs).
Other options: External Display, Wireless Lan, Extensive Memory card, Analog Output (ECG or IBP)

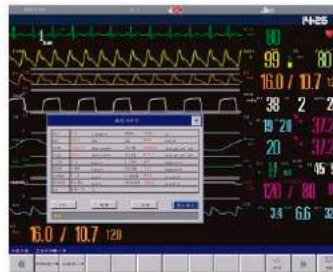
• Direccion: Cra 47 # 76 – 60 Piso 1 • Telefono: (5) 3681391 - 320 568 5481

• Cotizaciones: servicioalcliente@districlinic.com.co • Servicio tecnico: serviciotecnico@districlinic.com.co

• www.districtclinic.com.co



Drug dose calculation



Hemodynamics calculation



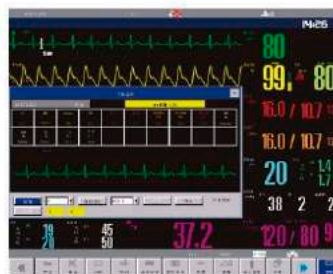
OXYCRG

- Display 16 minutes trend of HR, SPO2, RESP



Short trend

- Maximum 168 hour graphic and tabular trends



Other bed

- Display other bedside monitor's all parameter and one waveform, support user defined parameter display



Big font

- User can select 5 parameters (related waveform will display if available)
- Clear observation in a long distance, especially suitable for ICU, CCU room checking and monitoring during night



ICG



- Non-invasive method to measure patient's Cardio Output and Hemodynamic status, safe and easy operate



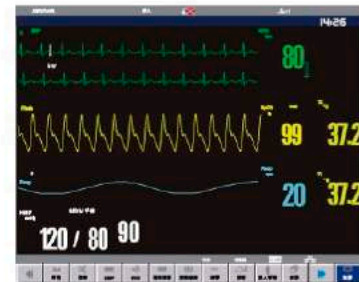
AG



- Anaesthesia Gas module, measure concentration of Et and Fi CO₂, O₂, N₂O and ISO, ENF, DES, SEV, HAL



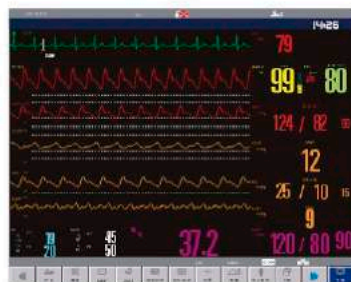
SpO₂



- Masimo / Nellcor SpO₂ is optional
- High capacity against interference of ESU, motion & low perfusion



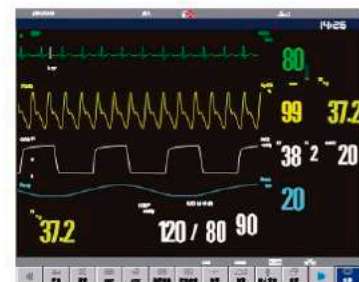
2IBP



- Max. 8 IBP measurement with waveform, Systolic, Diastolic, Mean Pressure on ART, CVP, ICP, PA, LAP etc to fulfill different positions invasive blood pressure measuring demands



CO₂



- Sidestream / Mainstream / Microstream EtCO₂ is optional
- Various option can be suitable for intubated patient, ventilation relied patient, non-intubated patient

EMS All-In-One Module options:

	EMS1	EMS2	EMS3	EMS4	EMS5	EMS6	EMS7	EMS8
RESP	✓	✓	✓	✓	✓	✓	✓	✓
2-TEMP	✓	✓	✓	✓	✓	✓	✓	✓
NIBP	✓	✓	✓	✓	✓	✓	✓	✓
2-IBP	✓	✓			✓	✓		
3/5 Lead ECG	✓		✓		✓		✓	
12-Lead ECG		✓	✓	✓		✓		✓
Digital SpO2	✓	✓	✓	✓				

